

An overview of the STFC Futures Programme and the STFC Cancer Strategy

Barbara Camanzi

STFC Futures Health and Cancer Care Theme Leader

Outline

- **The STFC Futures Programme**
- **The STFC Futures Health and Cancer Care Theme**
- **The STFC Cancer Strategy**
- **Summary**

An introduction to myself

- Born and grew up in Ravenna - Italy
- Laurea (1990) and PhD (1995) degrees in particle physics and post-doc in medical physics (1996 – 1997) at University of Ferrara - Italy
- 1997 – 2002: post-doc at Brunel University + scientific associate (2001 – 2002) at CERN
- 2003 – 2012: Particle Physics Dept / STFC
- 2010 – present: STFC Futures Programme
- 2009 – present: visiting lectureship at University of Oxford

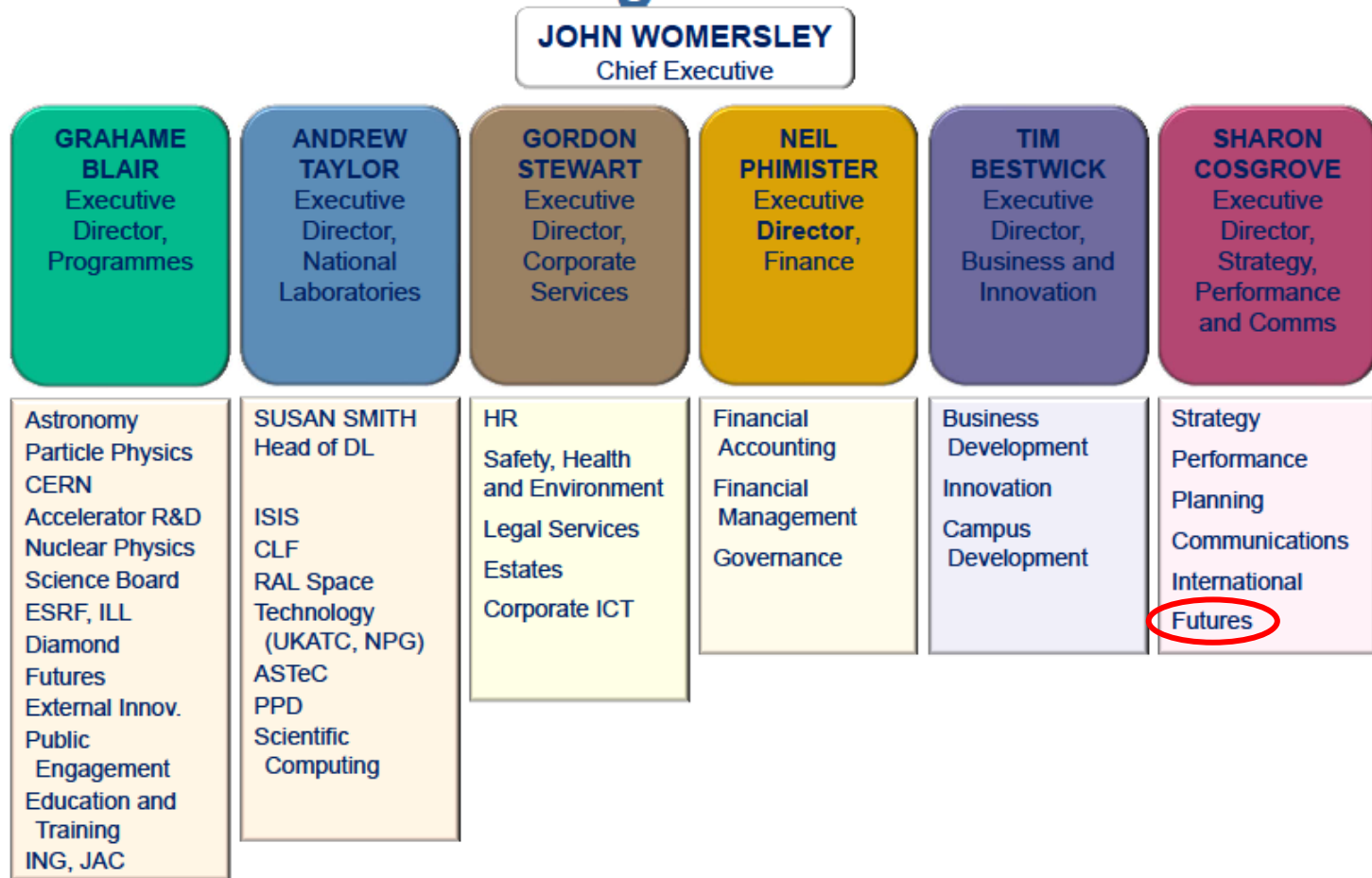
The STFC Futures Programme

The STFC Futures Programme

- Created in January 2009
- Goal: to increase STFC impact in meeting four societal challenges:
 1. Energy
 2. Environment
 3. Healthcare
 4. Security
- Challenge-led programme
- Creates opportunities = Identify unmet needs + Match them to STFC skills and expertise
- Performs horizon scanning and engages with policy makers

The Futures Programme in STFC

Senior management structure



The STFC Futures Team

Catherine Ewart	Head of the Futures Programme
Brayn Edwards	Defence, Security and Resilience Theme Leader
Kevin Smith	Energy and Environment Themes Leader
Barbara Camanzi	Health and Cancer Care Theme Leader
Geoff McBride	Horizon Scanning and Futures Analyst
Gareth Derbyshire	Industry Strategy Co-ordinator and Innovate UK Relationship Manager
Linda Enderby*	Performance Management and Stakeholder Engagement
Melanie Kidd	Resource Management

Firstname.Lastname@stfc.ac.uk

*** Until 31.03.15**

The STFC Futures Health and Cancer Care Theme

The Health and Cancer Care Theme

- **Challenge-led theme**
- **Focuses on two of DH priority areas:**
 - 1. Cancer**
 - 2. Dementia**
- **Identifies new opportunities:**
 - 1. Top-down plus bottom-up approach to identify unmet clinical needs**
 - 2. Match of unmet clinical needs with STFC capabilities**

The STFC Cancer Strategy

Aim of the cancer strategy

- For STFC to contribute to the national effort of curing more cancers and saving more lives
 1. By focussing on three key areas with unmet clinical needs:
 - a. Diagnosis
 - b. Radiotherapy
 - c. Long-term patient follow-up
 2. By encouraging partnership work
 3. By engaging with industry

Opportunities for accelerators in cancer

- **Areas requiring new accelerators:**
 1. **Production of radioisotopes for nuclear medicine imaging procedures**
 2. **Proton beam radiotherapy**
- **Accelerator requirements:**
 1. **Compact**
 2. **Low-cost**
 3. **100% reliable**

Timeline

- **To 27th February = inclusion of comments/feedback from some STFC Senior Management and key contacts within cancer community**
- **From 2nd to 15th March = publication process and final internal approval**
- **26th March = deadline for the release of the strategy (Purdah starts)**

Summary

- **The STFC Futures Programme look at broadening STFC impact in energy, environment, healthcare and security**
- **The STFC Futures Health and Cancer Care Theme concentrates on two DH priority areas of cancer and dementia**
- **The STFC Cancer Strategy, soon to be released, clearly identified two opportunity areas for the accelerator community**